

Moore Hip Prosthesis, Narrow Stem

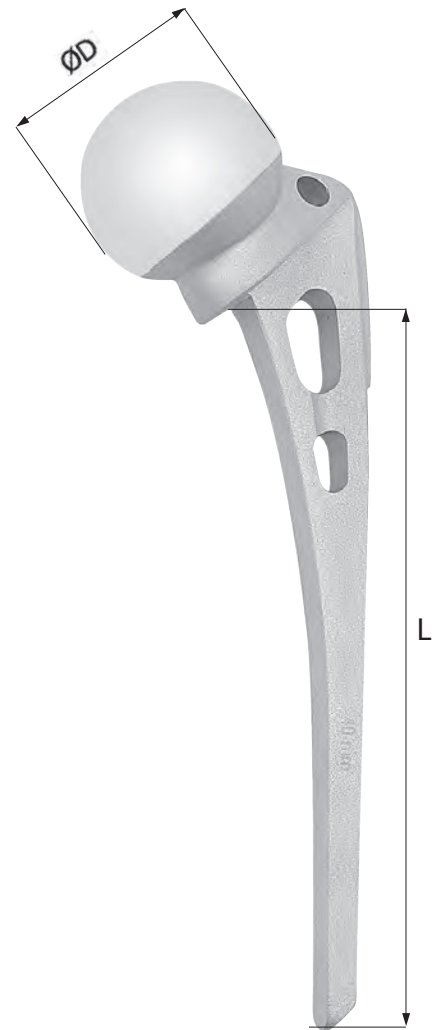
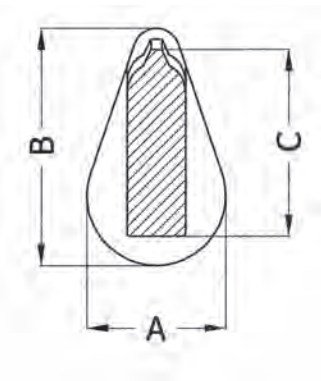
Hüftprothese nach Moore, schmalschaft

Prothèse de Moore, tige étroite

Indication: The narrow stem Moore hip prosthesis is designed to use when the medullary canal is too small to accept the standard Moore hip prosthesis. This prosthesis has the same features as the standard stem but is narrower than the regular stem in the medial/lateral direction. The design of this appliance approximates the anatomical shape of femur. The fenestrated stem permits packing of bone grafts and bony ingrowth for improved fixation. The availability of head sizes in fractional and millimeter increments offers the surgeon a wide selection for a more accurate fit to the acetabulum. The stem shape as well as the fin along the outer side helps to prevent rotation of the prosthesis. The loop at the

top of stem is provided for extracting the stem. The prosthesis feature has a 135° degree stem/neck angle for an anatomic reconstruction.

Material: Certified Stainless Steel according to ASTM F.138
 ISO 5832/1 Available in titanium according to ASTM F.136
 ISO 5832/3 and Co.Cr-alloy according to ASTM F.75
 ISO 5832/4



Ref. No Stainless Steel	Ref. No Titanium	Ref. No Co.Cr-alloy	Head Sizes		Stem Length L mm	A mm	B mm	C mm
			Diameter D mm					
ROT-691-038	ROT-692-038	ROT-693-038	38 mm		140	24	43	34
ROT-691-039	ROT-692-039	ROT-693-039	39 mm		140	24	43	34
ROT-691-040	ROT-692-040	ROT-693-040	40 mm		140	24	43	34
ROT-691-041	ROT-692-041	ROT-693-041	41 mm		140	24	43	34
ROT-691-042	ROT-692-042	ROT-693-042	42 mm		140	24	43	34
ROT-691-043	ROT-692-043	ROT-693-043	43 mm		140	24	43	34
ROT-691-044	ROT-692-044	ROT-693-044	44 mm		140	24	43	34
ROT-691-045	ROT-692-045	ROT-693-045	45 mm		140	24	43	34
ROT-691-046	ROT-692-046	ROT-693-046	46 mm		140	24	43	34
ROT-691-047	ROT-692-047	ROT-693-047	47 mm		152	25	44	34
ROT-691-048	ROT-692-048	ROT-693-048	48 mm		152	25	44	34
ROT-691-049	ROT-692-049	ROT-693-049	49 mm		152	25	44	34
ROT-691-050	ROT-692-050	ROT-693-050	50 mm		152	25	44	34
ROT-691-051	ROT-692-051	ROT-693-051	51 mm		152	25	44	34
ROT-691-052	ROT-692-052	ROT-693-052	52 mm		152	25	44	34
ROT-691-053	ROT-692-053	ROT-693-053	53 mm		152	25	44	34
ROT-691-054	ROT-692-054	ROT-693-054	54 mm		152	25	44	34
ROT-691-055	ROT-692-055	ROT-693-055	55 mm		152	25	44	34
ROT-691-056	ROT-692-056	ROT-693-056	56 mm		152	25	44	34
ROT-691-057	ROT-692-057	ROT-693-057	57 mm		152	25	44	34
ROT-691-058	ROT-692-058	ROT-693-058	58 mm		152	25	44	34